

The Patriarch

The First World : Good

Florent (Warly) VILLARD

December 2002 - September 2003XF

Version : 0.0.1 - 2005, October, 16th

Copyright ©2002,2003,2004,2005, Florent Villard

Cette création est mise à disposition selon le Contrat Paternité - Partage des Conditions Initiales à l'Identique disponible en ligne
[http ://creativecommons.org/licenses/by-sa/2.0/fr/](http://creativecommons.org/licenses/by-sa/2.0/fr/)
ou par courrier postal à Creative Commons, 559 Nathan Abbott Way, Stanford, California 94305, USA.

Remerciements

Préface

Thomas
September, 2003

Châteauvieux

Ylraw

Sydney, 2002, December, 14th - 2002, December, 22nd

Sarah

Desert

Patrick



Melbourne

Bread

Naoma

Reunion

Erik

Thomas

Alive

Riviera and Sun

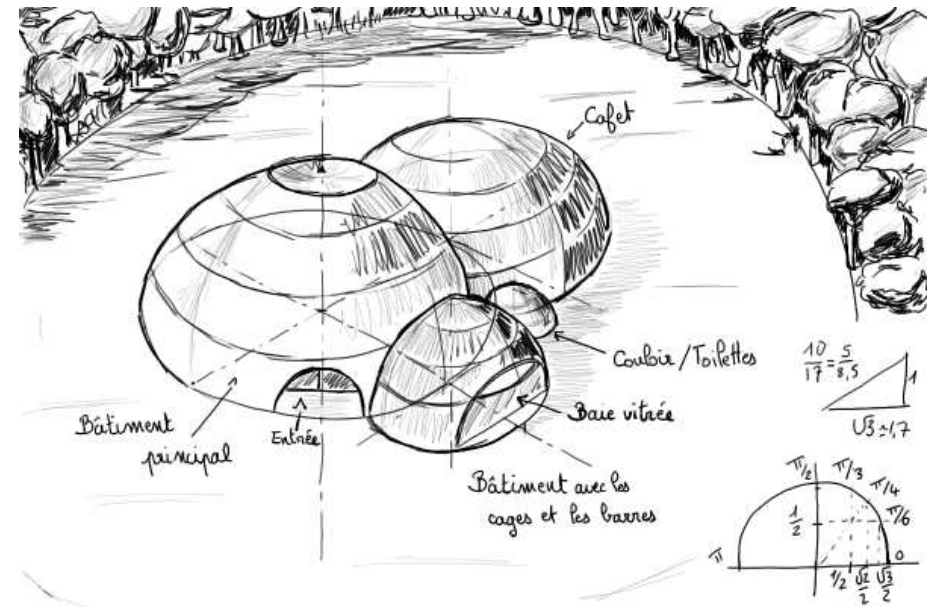
War

Étienne

Ylraw 2
Sydney, 2002, December 22nd - Stycchia, Day 130

Sydney 2

The beyond

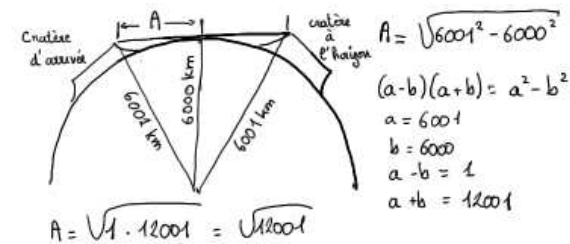
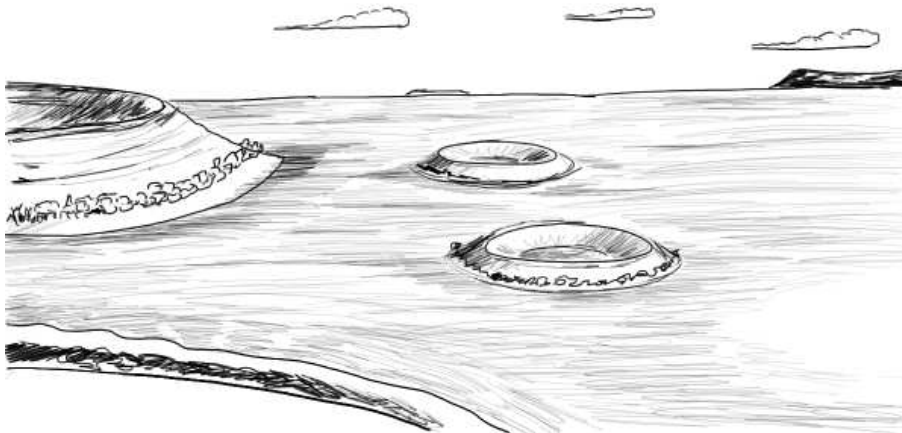


Bakorel

Departure

Stycchia

Crater



Méthode de Newton (Méthode de la tangente) pour trouver $\sqrt{12001}$.

Pour la fonction $f(x) = x^2 - 12001$, $f(x) = 0$ pour $x = \sqrt{12001}$

Prenons $x_0 = 100$

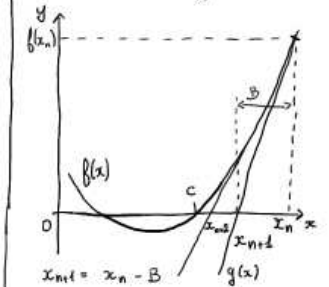
$$x_1 = 100 - \frac{f(100)}{f'(100)} = 100 - \frac{10000 - 12001}{2 \cdot 100} = 100 + \frac{2001}{200} \approx 110$$

$$x_2 = 110 - \frac{f(110)}{f'(110)} = 110 - \frac{12100 - 12001}{220} = 110 - \frac{99}{220} \approx 109,5$$

$$A \approx 109,5 \text{ km}$$

Distance du cratère $\approx 220 \text{ km}$

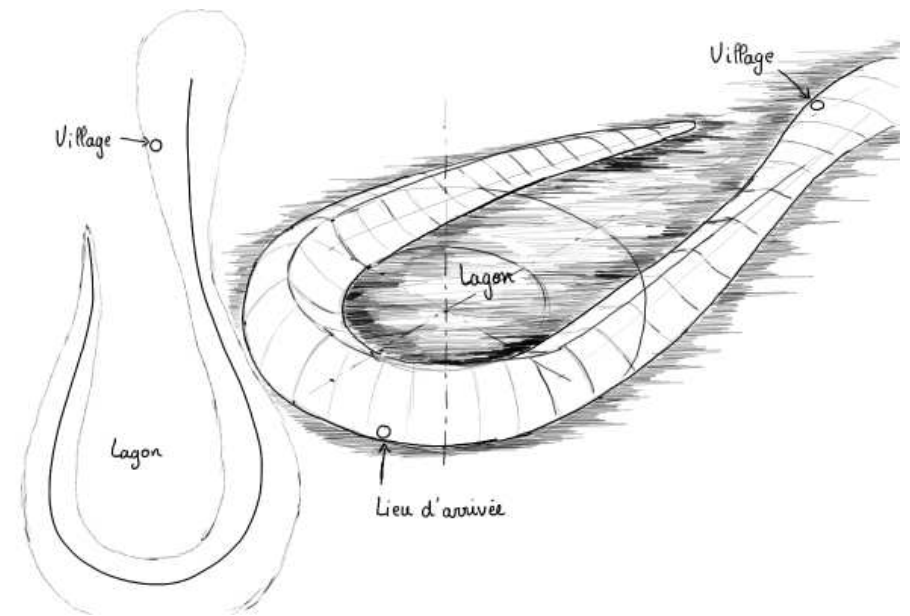
Méthode de la tangente



La suite des x_n tend vers α pour lequel $f(x) = 0$

Crossing

Lagoon



Beasts

Village

Ylraw 2
Pénoplée

Childhood

Love Affairs

Symphone

Debate

Free Choice

Naoma
Sydney, 2003, January, 2nd

Wake Up 2

Appendix

Relation Table

The image displays four identical, empty coordinate systems arranged in a 2x2 grid. Each coordinate system is defined by a horizontal x-axis and a vertical y-axis intersecting at an origin. The axes are represented by thin black lines. There are no tick marks, labels, or data plotted on any of the axes. The background is a uniform light gray.

Table des matières

Thomas September, 2003	4
Châteauvieux	5
Ylraw Sydney, 2002, December, 14th - 2002, December, 22nd	7
Sarah	8
Desert	9
Patrick	10
Melbourne	11
Bread	12
Naoma	13
Reunion	14
Erik	15
Thomas	17
Alive	18

TABLE DES MATIÈRES	48
Riviera and Sun	19
War	20
Étienne	21
Ylraw 2 Sydney, 2002, December 22nd - Stycchia, Day 130	23
Sydney 2	24
The beyond	25
Bakorel	26
Departure	27
Stycchia	28
Crater	29
Crossing	30
Lagoon	31
Beasts	32
Village	33
Ylraw 2 Pénoplée	35
Childhood	36
Love Affairs	37
Symphone	38
Debate	39

TABLE DES MATIÈRES	49
Free Choice	40
Naoma Sydney, 2003, January, 2nd	42
Wake Up 2	43
Appendix	45
Relation Table	46

Table des figures

.....	10
.....	25
.....	29
.....	29
.....	31